

# under the same sun

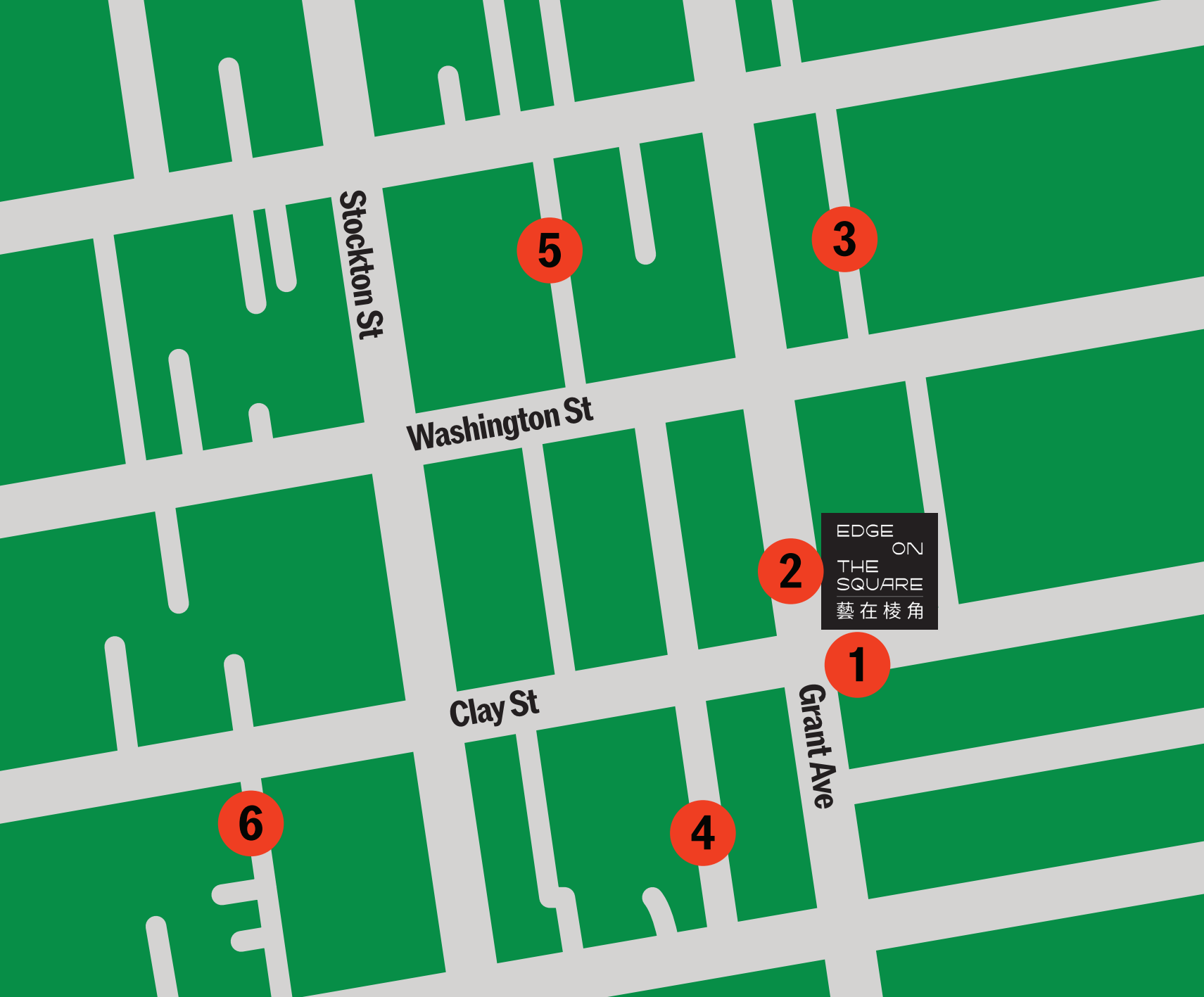
Reimagining the Edges of Chinatown

Saturday  
9 • 30 • 2023  
5-10PM



# under the same sun

EDGE ON  
THE  
SQUARE  
藝在棱角



## wayfinder

### 1 Edge on the Square

Ongoing

- Macro Waves, *Collective Futures*
- Indira Allegra, *TEXERE*
- Bahar Behbahani, *Knead Me A Moon*
- Lisa Solomon × Christine Buckton Tillman, *Chroma*

7:00–8:00pm

- Cone Shape Top × champoy × Macro Waves

### 2 Grant Ave

Ongoing

- Connie Zheng, *Nine Suns*
- Ahn Lee, *Silkworm Deity*

5:00–5:45pm

- *Festival Kick-Off Procession* with LionDanceME, Kim Ip × Self-Help for the Elders, CYC Youth, K-12 Youth, Duniya Dance + Drum

5:45–7:30pm

- YiuYiu (Chinatown Records)

8:00–9:30pm

- Alex S (Lower Grand Radio)

### 3 Wentworth Place

Ongoing

- Hang Huynh, *Happiness of Being A Kid*

6:00–9:00pm

- TNT Traysikel

### 4 Waverly Place

Ongoing

- AII SF Poetry Rubbing Activity

6:30–7:00pm

- Sierra Katow Stand-Up Comedy

7:30–8:30pm

- *Asian American Panel Discussion* with Sierra Katow, TT Takemoto, Vincent Pan, Weston Teruya, moderated by Miko Lee

8:00–10:00pm

- Al Wong, *Paper Sister*

### 5 Ross Alley

Ongoing

- Carol Anne McChrystal, *Walang Buwan II*

7:00–7:30pm

- For You, Chinatown Elders and Youth Activation

### 6 Joice Street

8:00–10:00pm

- Patty Chang, *Contortion*
- Patty Chang, *In Love*
- Theresa Hak Kyung Cha, *Permutations*

## welcome message

Greetings! As the inaugural Executive Director of Edge on the Square, I'm thrilled to welcome you to our 2nd annual contemporary arts festival, *Under the Same Sun: Reimagining the Edges of Chinatown*. It's going to be an incredible evening.

Building upon the success of our festival last year, *Neon Was Never Brighter: A Glimpse Into the Future*, this year's festival showcases over 20 Asian American and BIPOC artists and their multimedia artworks, installations, activations and performances. Our theme *Under the Same Sun* celebrates the enduring radiance of San Francisco Chinatown by shining a light on the diverse experiences of its robust community. As we are all under the same sun, we believe these stories will spark curiosity and resonate with people from all walks of life.

The festival reflects our vision for Edge on the Square and why I joined the team. Edge on the Square is a multi-disciplinary cultural hub, a new creative voice to bring together arts and advocacy to reimagine an inclusive city and nation. Through the transformative power of art, we tell the stories of Chinatown, an immigrant gateway with a deep history of social activism and public policies that shape our communal landscape today. We will engage with communities of color

to build collaborations that amplify our collective voice and power.

Tonight is a time for fun and festivities! Join our opening procession led by LionDanceME, Duniya Drum & Dance Company, and Kim Ip with Self-Help for the Elderly and SFUSD youth dancers. Come dance to DJ Yiu Yiu (Chinatown Records), DJ Alex S (Lower Grand Radio) and plant seeds for the future at Connie Zheng's community garden installation at Edge on the Square, 800 Grant Avenue. Look for interactive installations throughout the Chinatown neighborhood as well as film and light projections after dark. Don't miss comedian, actress, writer, and podcaster Sierra Katow's performance and the Asian American Panel Discussion at the Willie Woo Woo Clubhouse. And when you need a break from all the action, stop and grab a bite at one of our many Chinatown restaurants.

Thank you for gathering with us in solidarity, under the same sun. I hope the evening brings joy, laughter, and inspiration. Stop by and say hello, and come back to visit us at Edge on the Square.

Best wishes,

Joanne Lee  
Executive Director

# table of contents

5	under the same sun
7	art activations & programming
32	bios
47	about edge on the square

# under the same sun: reimagining the edges of chinatown

Edge on the Square presents its second annual contemporary art festival, to celebrate the enduring radiance of San Francisco Chinatown. As constant as the sun, are the residents, community members, organizations who continue to rise, persist and shine in the face of adversity. The past year has yielded moments of darkness; extending from the war in Ukraine to polarized rulings by the US Supreme Court impacting Americans’ freedoms, civil rights and liberties. The overturning of Roe vs Wade, affirmative action, and support of discriminatory policies are poignant reminders that the critical work for social justice and equity are continuous and ongoing.

Further within these tempos, the festival meditates on the voices, histories, and footnotes that contribute to the resilient luminosity of Chinatown, both sunlit and shaded: in the silhouetted crevices of multigenerational households, the afterglow of revolutions, and in the life and labor of all who identify with Chinatown as a landing spot of diverse togetherness. At Edge on the Square, we ask how we can crystallize illumination into revelation, potent regeneration into

progress, and healing transformation of harms and burns into collective power?

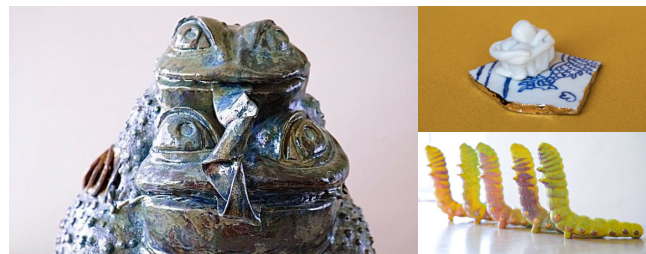
The one-day festival brings together over 20 Asian diasporic artists, artists of color, and their multimedia artworks, activations and performances to reflect on contemporary issues relating to individual and collective freedoms, identities, and civil liberties. Along with cultural partners, arts organizations, and community residents — the coalition of voices amplify unity and solidarity within multi and cross-cultural experiences and histories. Under the same sun, from the center to the ‘edges’ of Chinatown and beyond, we glisten with the resilience of the past, tenacity of now, and earned optimism for a future powered by collective action, persistent courage, and wise hope.

Featured artists and collectives include: Al Wong, Ahn Lee, Bahar Behbahani, Carol Anne McChrystal, Cone Shape Top, Connie Zheng, Duniya Dance & Drum Company, For You, Hang Huynh, Kim Ip, Indira Allegra, LionDanceME, Lisa Solomon x Christine Buckton Tillman, Lower Grand Radio, Macro Waves, Patty Chang, Sierra Katow, Theresa Hak Kyung Cha, TNT Traysikel, Yangyifan Dong x Kaming Lee, YiuYiu (Chinatown Records) and K-12 Youth Performance Group.

Curated by Candace Huey and Guest Curators Erina Alejo, PJ Gubatina Policarpio, and Sara Wessen Chang

## art activations & programming

### Ahn Lee



Ahn Lee, (Clockwise) **May Our Family Be Safe and Peaceful, Against All Odds**, and **Silkworm Diet**

Ahn Lee’s ceramics work involves archival research connecting the Cantonese diaspora and silkworms in the Bay Area; and deepening relations to their familial roots, ancestors, and community.

The mythical creatures represented were born by the oracle of the silk cocoon. By researching the physicality of silkworms and the forgotten legacy of silk sisters, Lee learned about the silk moth’s cocoon and its potential state of reincarnation. Beginning with the legacy of the silkworm, Lee constructs a contemporary Chinese folklore of a future where people emerge from this tense moment of racial violence amidst a global pandemic with power and grace. Following the direction of the silk thread, we find remnants of the four directional beings, queer diasporic mythical creatures based on the ancient Chinese divinity which were passed down to Lee from their queer grandmother and mother.

In collaboration with Connie Zheng’s **Nine Suns**  
Co-presented with Chinese Historical Society of America

## Al Wong



Al Wong, *Paper Sister* (2022)

Al Wong's *Paper Sister* (2022) is a response to the Chinese Exclusion Act which was enacted in the U.S. during the years of 1882-1943. This prohibited immigration on the basis of race. One of the only ways for families to come across was to become "paper" relatives of those who had legal status. This video montage expresses the emotions and turmoil these individuals endured.

## Asian American Panel Discussion

Edge on the Square's 2nd annual contemporary art festival presents a panel discussion with changemakers in various disciplines to share their perspectives on the critical issues that impact the Asian American community and how their work/practice reimagines the edges of social justice and equity.

Speakers include Sierra Katow (Stand-up Comedian, Actress, Writer), Weston Teruya (Artist, Cultural Producer), TT Takemoto (Artist, Scholar), and Vincent Pan (Co-Executive Director of Chinese for Affirmative Action). The panel is moderated by Miko Lee (Director of Programs at AACRE, Producer and Host of APEX Express).

Panelists (from top left):  
Sierra Katow, Weston Teruya, TT Takemoto,  
Vincent Pan and Miko Lee





## Bahar Behbahani

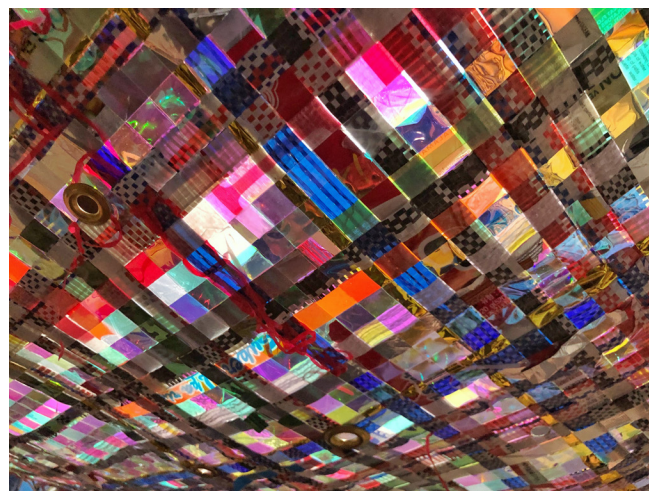


Bahar Behbahani, *Knead Me A Moon*

Bahar Behbahani's *Knead Me A Moon* is a collection of interdisciplinary, collaborative works which explores the power of bread through people's personal memories amid larger political and economic spheres of this universal sustenance. Behbahani—inspired by her inherent affection for bakeries in Iran, new global fears of climate, international wheat trades, and uncertainty in water conflicts—examines the blurred line between pleasure and pain in different marginalized communities. This poetic and personal tributary intimates contemporary sociopolitical issues surrounding our staple food and, in the process, invite different communities to contemplate. Created specifically for Edge's contemporary art festival, Behbahani will collaborate with local Chinatown bakers to access and share memories of healing and sustenance using somatic force, specifically through the physical act of kneading dough and the cross-cultural symbolism of bread throughout history.

Collaborators: Yummy Bakery, Garden Bakery

## Carol Anne McChrystal



Carol Anne McChrystal, *Walang Buwan II (Palengke Pasalubong Meryenda)*

*Walang Buwan II (Palengke Pasalubong Meryenda)* by Carol Anne McChrystal is a site sensitive art object inspired by making connections across geography and between diasporas. The work will consist of a singular woven object based on the form of the banig—a mat traditionally woven from palm leaves in many Filipino cultures.

This object will be made from non-traditional materials like large plastic tote bags purchased in souvenir shops around San Francisco's Chinatown, as well as discarded plastics and rice bags collected from what has come to be known as the world's first and oldest Chinatown in Binondo, Manila in the Philippines.

The woven object takes its cues from the way that tarps are hung in alleyways in Manila's Chinatown, as a way to

protect vendors from the intense noontime sunshine and heavy rains, contrary to the lack of sunshine in San Francisco's Chinatown.

In contrast to the abundant vertical signage in Ross Alley the woven form will be suspended horizontally at a height of about 10 feet by securing directly to existing architectures present in the building surfaces using cordage made from plastic waste.

The space created underneath this temporary canopy will call back to the traditional use of banig in daily life in the Philippines as a space for gathering, ritual and rest. Pasalubong technically means “souvenir” and it’s connected to a larger Filipino tradition of travelers bringing gifts from their destination to people back home—an idea complicated by the conditions surrounding the root causes of migration. Through material, method, imagery and sitedness, **Walang Buwan II** is a meditation on home and shelter in diaspora, and questions authentic cultural experience as it intersects with the slippery relationships between ethnic enclaves and tourist-destinations.

## Cone Shape Top



Cone Shape Top × champoy × Macro Waves

Cone Shape Top is a Chochenyo Ohlone (Oakland)-based platform, specialty shop and project space that celebrates underground culture through music, books, gifts and arts with a strong emphasis on local communities run out of an apartment by Cat Lauigan and Matt Brownell.

**For Under the Same Sun**, Cone Shape Top will present a live performance featuring artist, champoy in collaboration with Macro Waves. champoy (they/them/he/him/she/her siya) is a queer interdisciplinary artist, filmmaker and educator weaving historical and personal narratives through film, installation and performance.

Collaborators: Macro Waves  
Supported by: California Arts Council



## Connie Zheng



Connie Zheng, photographed with California native wildflowers grown by the artist

Connie Zheng's installation is titled **Nine Suns**. In the Chinese myth of Hou Yi and the ten suns, there were once ten suns, who would each cross the sky one by one. However, when all ten of the suns appeared in the sky at once and scorched the earth, the archer Hou Yi shot down nine of the suns, leaving just the one we have today.

In reference to this myth and to the festival theme of **Under the Same Sun**, **Nine Suns** imagines a gentler transformation of the nine suns who fell from the sky, in the form of a modular outdoor garden installation consisting of nine circular planter tubs mounted on movable circular dollies painted to look like the suns shot down by Hou Yi.

Each planter will contain popular Asian food plants and will be installed on top of a circular wooden disk bearing a sun

pattern modeled after a celestial emblem found at a Bronze Age Chinese site.

On the day of the festival, the nine planters — each painted a cheery yellow — will be arranged on Grant Avenue in a wavy line reminiscent of an undulating horizon. In the story of the ten suns, each sun turned into a three-legged raven as it fell from the sky; stenciled images of three-legged ravens will appear on the ground between the planters in order to connect them in a constellation and to create a sense of the ground as sky. We are often taught to look to the stars as the next frontier, yet it is the artist's hope that this installation might encourage viewers to spend more time tending to the earth we have as our home.

At the end of the festival, the planters will be moved to Kai Ming Head Start Preschool, for use in the school's outdoor education program. Because the planters will be installed on dollies with wheels, they will be mobile and easily configured into different arrangements depending on Kai Ming's needs.

This installation is part of **The Nine Suns Dance Garden**

Co-presented by Edge on the Square  
and Chinese Culture Center of San Francisco

Supported by: Office of Economic  
and Workforce Development

Collaborators: Alex S (Lower Grand Radio),  
Ahn Lee, Duniya Dance and Drum Company, Kim Ip,  
LionDanceME, YiuYiu (Chinatown Records).

## Duniya Dance and Drum Company



Duniya Dance and Drum Company

For **Under the Same Sun**, Duniya Dance and Drum Company will present a procession of Bhangra dancers and musicians in a celebration of Asian solidarity. Bhangra is traditionally a harvest dance and music from Punjab in India and Pakistan. Today it is done at weddings and anywhere that a party is happening!

This performance is part of **The Nine Suns Dance Garden**

Co-presented by Edge on the Square and Chinese Culture Center of San Francisco

Supported by: Office of Economic and Workforce Development

Collaborators: Alex S (Lower Grand Radio), Ahn Lee, Duniya Dance and Drum Company, Kim Ip, LionDanceME, YiuYiu (Chinatown Records).

## Erika Chong Shuch (For You)



Erika Chong Shuch (For You), **The Welcoming: Back to The Great AAPI Elder Print Off**

When reports of violent attacks against AAPI elders started to circulate at an alarming rate in 2021, we immediately thought of our own Asian immigrant parents and grandparents. As artists working in social practice and performance, we paired a national group of AAPI artists with AAPI elders associated with LBFE and other organizations. Those artists produced a homemade activist poster that amplifies their elder's voice.

As part of the annual festival **Under the Same Sun: Reimagining the Edges of Chinatown**, For You will host a mini-parade performed by the public, and past participating artists and elders. We created the posters at a time when gathering in public was difficult and now we are excited to come together to amplify the participating elders' voices in person.

Collaborators: For You artists and Self-Help for the Elderly.

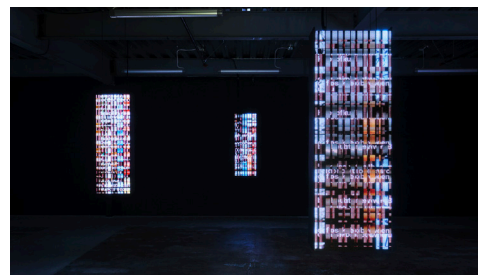
## Hang Huynh



Hang Huynh, **Happiness of Being a Kid**

Hang Huynh's **Happiness of Being a Kid** is a multimedia light and sound installation consisting of ceramic leaves painted with light sensitive pigments hung underneath a large-scale steel canopy frame. The clustered arrangement of ceramic leaves, when moved by the breeze or by hand, gently strike one another creating a tinkling sound that invokes both a feeling of serenity and playfulness. In detail, painted on each ceramic leaf is an illustration, drawing or message written by visitors and community members with wishes for joy, abundance and fun. In the evening, the installation will become activated via an illumination from UV lights. Huynh's installation reminds us to immerse ourselves in play and playfulness surrounded by sound and visual delight.

## Indira Allegra



Indira Allegra, **TEXERE**

Indira Allegra's **TEXERE** is an art-based mental health app that weaves digital memorial tapestries from words, images, and soundbites about people's losses. "Texere" is a Latin verb that means "to weave", and is where the words "text" and "textile" originate from. When you visit **TEXERE**, you are invited to choose from a menu of losses that relate to your own story. You might choose the loss of sleep, the loss of respect for someone who once helped you, or the loss of one's indigenous language. Once you select a focus, you make an anonymous entry about how that loss makes you feel. **TEXERE** then transforms that entry into a digital thread that is woven into a larger digital tapestry of entries from people all over the world who are grieving that same loss. Each time anyone engages in the simple ritual of making a new entry, the composition of the tapestry changes. The tapestry can be changed an infinite number of times. Through woven patterns, **TEXERE** is a new kind of memorial experience that provides a visual archive of how we collectively change and grow in relationship to our experiences of loss.



## Kim Ip



Kim Ip, photographed by Minoosh Zomorodinia

**Planting Beneath Shade Trees** by Kim Ip is a collaborative dance work melding the intergenerational communities of Chinatown with the dance communities that Ip works with closely. Many of her dance collaborators also collectively organize an arts collective with her, Asian Babe Gang, wherein they curate art adjacent events that focus on cultural dialogues and belonging amongst Asian Queer Community. For **Under the Same Sun**, Kim Ip will collaborate with Self-Help for the Elderly, CYC and SFUSD youth dancers.

This performance is part of **The Nine Suns Dance Garden**

Co-presented by Edge on the Square  
and Chinese Culture Center of San Francisco

Supported by: Office of Economic  
and Workforce Development

Collaborators: Alex S (Lower Grand Radio),  
Ahn Lee, Duniya Dance and Drum Company, Kim Ip,  
LionDanceME, YiuYiu (Chinatown Records).

## Lisa Solomon & Christine Buckton Tillman



Lisa Solomon and Christine Buckton Tillman, **Chroma**

**Chroma** is the result of a long distance collaboration between Lisa Solomon and Christine Buckton Tillman that explores the power of color via objects from everyday life. **Chroma** is a large-scale crowd-sourced installation made of objects gathered from the community, constructed of various forms of “junk” – arbitrary and otherwise disposable items – that read as one color. The pulling together and reconfiguration of broken objects into a vivid, bright and cheerful composition underscores the potency of transformation, and reframes our perspective around the possibility of repair and new beginnings.

## Lisa Solomon



Lisa Solomon, **Senju Kannon**

**Senju Kannon** is a series of chromatic [red, orange, yellow, green, blue, purple, gray, pink] prints – depicting 1000 Buddha hands (Senju Kannon 1000 armed Buddha). Placed in concentric circles, each hand represents a mudra of blessing/protection and teaching recalling the sacred form of the mandala.

**Senbazuru** is a chromatic set of letterpress prints of the 1000 cranes. Each diptych contains 500 cranes each – in expanding concentric circles, and strung together so that thread ties the bottoms together. The works on paper look to the tradition of making 1000 cranes for birthdays, anniversaries and other occasions for wishing good luck, health and wellness.

## Lower Grand Radio



Lower Grand Radio

Lower Grand Radio is a community-driven internet radio station in Oakland, working to build a healthy scene of growth and learning in music locally. Founded in 2015 by Alex Shen, Lower Grand Radio has grown from his garage to their own studio home on Broadway, hosting an expansive and diverse range of programming that brings together touring artists and local musicians, community groups, and businesses. Spanning from their studio to various Oakland Public Library branches and local Bay Area businesses, LGR hosts close to 100 monthly radio shows, presents radio workshops, and produces live events to provide a place for a booming community of DJs, producers, radio enthusiasts, and music lovers to practice, record, and showcase what they do.

This DJ set is part of **The Nine Suns Dance Garden**

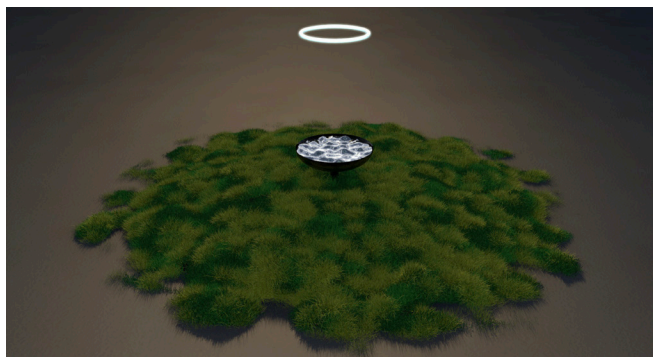
Co-presented by Edge on the Square  
and Chinese Culture Center of San Francisco

Supported by: Office of Economic  
and Workforce Development

Collaborators: Alex S (Lower Grand Radio),  
Ahn Lee, Duniya Dance and Drum Company, Kim Ip,  
LionDanceME, YiuYiu (Chinatown Records).



## Macro Waves



Macro Waves, **Collective Futures**

In response to our collective experiences navigating the ongoing global pandemic, Macro Waves reimagines a future that centers healing through community care. As we have re-emerged from shelter-in-place, back to the hustle of in-person life, how do we pause and re-gather what we have collectively experienced? The notion of collective care has been practiced by non-western communities for generations before self-care found its way into American culture. How can we become critical of the rhetoric around care when it is being used for profit? While caring for the self is fundamental to our collective well-being, when does the term self-care cause more harm than good?

Macro Waves dives deeper into the practice of care through their latest project, **Collective Futures**, a multimedia art experience that focuses on the act of re-gathering, the point of re-entry, and the process of collective transformation. Through an immersive

installation and a series of collaborative healing-based workshops, this project challenges our perceptions of individual experiences and transforms them into a shared process. **Collective Futures** invites viewers to re-gather through a multimedia-based interactive installation that utilizes haptic vibrational technology, known to invoke relaxation and alleviate stress. Visitors are welcome to collectively pause by sitting, laying, sharing, and interacting with the vibrating tactile installation while listening to accompanying audio that synchronizes with each vibration. The vibrations offer a holistic experience uniting the senses of touch, sight, and sound.

By cultivating a collaborative culture of exploration, inquiry, and play within the healing process, this multimedia art experience will also act as a workshop space for collaborators to facilitate alternative healing modalities focused on sound, breathwork, meditation, and intergenerational wellness practices.

Supported by: California Arts Council

## Patty Chang



Patty Chang, *Contortion* (2000)

Patty Chang's *In Love* (2001, 3:28 minutes) explores the abstract boundaries of love, sacrifice, familial relations and inheritance. Played in reverse, the artist is seen locked mouths with her mother and her father. Tears stream simultaneously from their eyes, revealing they are eating an onion. In their embrace and collective survival, there exists sacrifice and struggle.

In *Contortion* (2000, 2:28 minutes), Patty Chang exaggerates the exotic stereotype of the Asian American woman as an acrobat in this playful film. The artist depicts herself adorned in red embroidered silk, reclining, performing tricks for the viewer. Another body is in collaboration with the artist to create this illusion of hyperflexibility.

## Sierra Katow



A half-hour of stand-up comedy written and performed by Sierra Katow covering topics of Asian American identity, family, and relationship.

Co-presented with Center for Asian American Media

## Theresa Hak Kyung Cha



Theresa Hak Kyung Cha, *Permutations*, 1976

Collection of the University of California, Berkeley Art Museum and Pacific Film Archive, Gift of the Theresa Hak Kyung Cha Memorial Foundation.

Copyright: Regents of the University of California.  
Courtesy Electronic Arts Intermix (EAI), New York.

Theresa Hak Kyung Cha, *Permutations*, 1976, (11:40 minutes).

Frames of Theresa Hak Kyung Cha's sister punctuate this structuralist film: her face with eyes open, gaze locked with the viewer; her face with eyes closed, denying the gaze; the back of her head, showing only her long black hair in contrast with the white background. Through the accelerated repetition of frames, there is a hint of suspense. Watch closely, the artist features herself in a single frame. This dynamic nods to the interconnected relationships between Asian American women, the solidarity in shared characteristics and how we are perceived as the other.

## TNT Traysikel



(Left to right) Paolo Asuncion, Michael Arcega, and Rachel Lastimosa pose in front of *TNT Traysikel* during The Moto Social event at Excelsior Coffee in San Francisco. Photo: Alvin Dizon

*TNT Traysikel* is a public artwork that engages the streets of San Francisco. Traysikels are ubiquitous transport vehicles in the Philippines but a rare sight in the United States; we are aware of 5 Philippine-made sidecar rigs in the US. For many, its existence in America contributes to a sense of belonging and comfort. This is amplified through karaoke activations called TNT SideCaraoke, where people come together to sing and celebrate in community. *TNT Traysikel* is also the protagonist in a forthcoming film that explores notions of home and a cultural awakening.

Supported by: San Francisco Arts Commission



## Yangyifan Dong × Kaming Lee



Yangyifan Dong × Kaming Lee, **luminosity** from the **edge, enduring, healing, imagination, luminosity, radiance, resilience, solidarity, thrive, together** series

Yangyifan Dong × Kaming Lee's **edge, enduring, healing, imagination, luminosity, radiance, resilience, solidarity, thrive, together** is an interactive digital artwork that delves into the concept of accessing the sun's energy and channeling it into a symbol of collective strength. Viewers are provided with a QR code to access a video work that accompanies the physical art piece.

## YiuYiu (Chinatown Records)



YiuYiu (Chinatown Records)

YiuYiu (Rochelle Hoi-Yiu Kwan)'s "Chinatown Records" is a homegrown community effort to celebrate the richness of music, memory, and history that comes with inherited family collections. Across close to 20 different collections spanning 1920's–2000's Chinese music and beyond from family, friends, and neighbors, Chinatown Records continues to grow as a community-powered, living archive. Rooted in deep listening and relationships, Chinatown Records imagines music as a familiar entry point and bridge for opening up conversation, sparking memories, and building connections across generations—starting right here at home with our loved ones.

This DJ set is part of **The Nine Suns Dance Garden**

Co-presented by Edge on the Square  
and Chinese Culture Center of San Francisco

Supported by: Office of Economic  
and Workforce Development

Collaborators: Alex S (Lower Grand Radio),  
Ahn Lee, Duniya Dance and Drum Company, Kim Ip,  
LionDanceME, YiuYiu (Chinatown Records).

## Ahn Lee

Ahn Lee (they/she) is a queer Cantonese artist and researcher. Their interdisciplinary practice of ceramics, research and performance relies on a combined methodology of autobiographical re-making and research on the Cantonese diaspora. As a person of Sunwui descent, Ahn explores their ancestral roots to this contested site of capitalism and imperialism through leveraging archival research historiography, critical race and gender theory. Ahn received their MFA in May 2022 from UC Berkeley's Art Practice Department, where they were the 2021 Jack K. and Gertrude Murphy Awardee. Ahn previously studied in UCLA's Gender Studies Department as a Eugene V. Cota Robles Graduate Fellow before leaving the program to pursue art full-time. In 2022, Ahn received the Simone V. Leigh Zenobia Award for the Watershed Ceramics Residency. In 2023 Ahn held residencies at Real Space and Time and Anderson Ranch Center for the Arts (Ceramics). Ahn is currently a 2022–23 Fellow at the Headlands Center for the Arts.

## Al Wong

Al Wong is a native San Franciscan artist and has spent the past 50+ years making art in a variety of mediums. His career has developed from his early years as a student at the San Francisco Art Institute where he earned his Master of Fine Arts degree, to serving as an Art Professor for over 30 years at several universities and colleges including the San Francisco Art Institute, the California State University system and Mills College. He has shown at exhibition venues such as the New York Museum of Modern Art, the Whitney Museum of American Art, the San Francisco Museum of Modern Art and the UC Berkeley Museum & Pacific Film Archive. His work has toured nationally and internationally including Europe, South America and Japan. In addition, he has received several awards and honors including an NEA Grant in 1983, a Guggenheim Fellowship in 1986, and a Flintridge Foundation Visual Artist Award in 1997.

## Alex S (Lower Grand Radio)

Alex Shen is the founder and station manager of Lower Grand Radio, a community-driven internet radio station in Oakland. From the LGR studio to various Oakland Public Library branches, Alex works with local and touring musicians, youth, and organizations to create safe and community-friendly spaces for people to learn and experiment with radio and showcase their musical interests. In addition to running the station, he produces live events with local groups and businesses, designs their merchandise and mixtapes, and presents youth radio workshops. In tandem with LGR, Alex is also a musician, who has released four full length albums with his bands and toured across the country and abroad. Born and raised in the Bay Area, Alex is proud to have a homebase in Oakland.

## Bahar Behbahani

Bahar Behbahani is a painter, collaborator, educator, and a hospitable instigator. Behbahani's interdisciplinary work explores the complexities of memory, erasure, adaptation, and a fundamental search for a sense of place. Her central, multi-tiered subject for the past decade has been the Persian garden, one that she has re-tooled to her personal and shared history, illuminating the parallels and dynamics at work between historiography and present sociopolitical circumstances.

In 2020, she challenged her largest public art project to date, taking it to Pakistan. She worked closely with the Lahore Irrigation Department to create a permanent artwork for the city that ties the regional history and local community to the transboundary Ravi River. In 2019 Behbahani was granted a Creative Capital Award for her proposed project for a public Persian garden in New York City, 2020 Joan Mitchell Foundation Painters and Sculptors Grant, and the Drawing Center Fellowship in 2019, among others. Behbahani's recent work is featured as part of the Sharjah Biennial 15 (2023), conceived by late Okwui Enwezor, and curated by Hoor Al Qasimi; Garden of Desire, a sculptural installation, reflecting on the Persian garden as a paradoxical site of beauty and hospitality on the one hand and its auxiliary purpose for diplomatic and imperialistic negotiations on the other.



## Carol Anne McChrystal

Carol Anne McChrystal's sculptures have been exhibited in Los Angeles at Mata Gallery, Avenue 50 Studio, and Adjunct Positions, and internationally at Galleria Duemila (Manila) and Horse & Pony (Berlin). She has participated in several residency programs, including Skowhegan School of Painting and Sculpture, Sitka Center for Art & Ecology, and Burren College of Art and her arts writing has been published on platforms like Art Practical. In addition to receiving grants from the Puffin Foundation and Arts Council Ireland, in 2021 she was a recipient of the Mozaik Foundation Ecosystem X, an award which recognizes artists using contemporary art as a medium for social change. Carol Anne received her MFA from California College of the Arts, and she is currently based on unceded Tongva land, where she organizes with the anti-imperialist women's group, GABRIELA. As part of the collaborative duo Nightmare City from 2008-2016, she created immersive environments that were exhibited at Alter Space in San Francisco, The Luminary in St. Louis, and Horse & Pony in Berlin among others, and has shown video works at Essex Flowers in New York, MASS Gallery in Austin, and ACRETV in Chicago. Their work has been written about in publications such as ArtForum and Modern Painters.

## Christine Buckton Tillman

Working across media Christine Buckton Tillman makes work stemming from collected imagery and objects. She counts advertising, algorithms, color, celebrations, display, parties, print media, and Natural History Museums as her main influences.

She has Midwest roots- earning her BA at Coe College and her MFA from the University of Iowa. She lives and works in Baltimore, Maryland. Christine has been a member of the Drawing Center Viewing Program and received a MSAC Grant for her Works on Paper. She has worked collaboratively with Oakland, CA artist Lisa Solomon since 2015 on their project Chroma where they collect and categorize objects by color.

## Cone Shape Top

Cone Shape Top is a Chochenyo Ohlone (Oakland)-based platform, specialty shop and project space that celebrates underground culture through music, books, gifts and arts with a strong emphasis on local communities run out of an apartment by Cat Lauigan and Matt Brownell. They curate monthly programming through their podcast series, physical exhibitions and live performances / dj sets. They also host a monthly radio show on Lower Grand Radio every 3rd Monday called 'Cone Zone' where they do live mixes of shop selections.

## Connie Zheng

Connie Zheng is a Chinese-born artist, writer and experimental filmmaker based out of xučyun (Oakland, California). She works with maps, seeds, food, environmental histories, speculative fiction, field recordings and hand-drawn animation. Her projects frequently include participatory scenarios and seek to diagram dynamic relationships between human and more-than-human worlds. Her work has been exhibited and screened nationally and internationally, through venues such as the Asian Art Museum, the Contemporary Jewish Museum, Framer Framed (Netherlands) and Salt Beyoğlu (Turkey). She has received fellowships and awards from the Headlands Center for the Arts, the Oak Spring Garden Foundation, and the Puffin Foundation, among other organizations, and her work is held in the collections of the Kadist Foundation and the David Rumsey Map Center at Stanford University. She has published essays in The Routledge Companion to Contemporary Art, Visual Culture, and Climate Change, Errant Journal and SFMOMA's Open Space. She is currently a PhD student in Visual Studies at the University of California—Santa Cruz.

## Duniya Dance and Drum Company

Founded in April 2007 by Artistic Directors Joti Singh and Bongo Sidibe, Duniya Dance and Drum Company creates dance and music from Punjab, India, and Guinea, West Africa, as well as unique blends of these forms and beyond. Our mission is to cultivate respect for traditional forms, foster cultural exchange, effect social justice and engage in community building.

## **For You (Erika Chong Shuch and Ryan Tacata)**

For You creates original, participatory performances that bring strangers together for intimate encounters. For You projects range from one-to-one performances to large-scale, evening-length theatrical works. Each performance is grounded in the lived experiences of participant-collaborators. Their works include First Things First (2019–20, the Momentary), Artists and Elders (2020–22), Dr. G's Bingo Extravaganza (2022, Oregon Shakespeare Festival), East of Pacific Audio Tours (2023, Cantor Art Center at Stanford University) and The Welcoming (2023–current).

## **Hang Huynh**

Hang Huynh is an interdisciplinary artist who immigrated from Sai Gon in 2009 and currently lives and works in San Jose. Huynh works in mixed media including oil painting, photography, and ceramics. Her process and practice often pulls from her personal biography, narratives, histories - both traumatic and healing moments - within and reflective of her immigrant experience. As a teaching artist and class coordinator for Chopsticks Alley Art, Huynh acknowledges and appreciates the beauty of Southeast Asian cultures. She earned the President's Scholar and Fine Arts Scholarship at San Jose State University in 2021. She is pursuing a BFA degree in Spatial art and a minor in Photography at San Jose State University.

## **Indira Allegra**

Indira Allegra is an artist and founder of Indira Allegra Studio—a performative craft design studio using weaving as a ritual, conceptual framework to craft living structures off the loom and in the world. Thinking as a poet, threads of connection between disparate experiences can be discovered. Moving as a weaver, the fates of seemingly disconnected stories, objects and beings become interlaced and transmuted into a greater whole. A living structure can be performed as a memorial, a text, or the movement of human and non-human behavior across a rolling planet. Allegra's work has been featured in ARTFORUM, The Art Newspaper, Artnet,

Art Journal, BOMB Magazine, SF Chronicle and KQED and in exhibitions at the Museum of Arts and Design, Center for Craft Creativity and Design, Yerba Buena Center for the Arts and the Museum of the African Diaspora among others.

Allegra's writing has been featured in Theater, TEXTILE: Cloth and Culture, American Craft Magazine, Manual: A Journal About Art & Its Making, Cream City Review and Foglifter Journal among others. They have been the recipient of numerous awards including Creative Capital, United States Artists Fellowship, Burke Prize, Gerbode Choreographer Award, Art Matters Fellowship, Mike Kelley Artist Project Grant and the Lambda Literary Fellowship.

## **Kaming Lee**

Kaming Lee is a designer based in New Haven, prioritizes long-term and meaningful partnerships, consistently demonstrating an exceptional commitment to detail.

## **Kim Ip**

Kim Ip is a New Zealand born, Queer femme, first generation Chinese American choreographer and movement artist based in the Bay Area. Aesthetically, Kim's choreography is inspired by femme fatales of film noir and video vixens of pop culture. The physicality of her choreography utilizes release floor work, hip hop, and contemporary dance. Thematically she creates work about gods, otherworldly creatures, and pop stars highlighting the rigidity of their roles in society and how they might be liberated through the act of dance and the cultural exchange that is live performance. Kim makes dance that intersects entertainment with cultural dialogue. She has received residencies from Shawl-Anderson Dance Center, SafeHouse, and CounterPulse. She has shown her work at Fort Mason Center for Arts and Culture, CounterPulse, B4BEL4B Gallery, and Gray Area. Kim is incredibly humbled and honored to be working alongside CMAC and the San Francisco Chinatown Community.

## Lisa Solomon

Lisa Solomon resides in Oakland, California with her husband, child, an assortment of oddball rescue pets, a garden, a backyard studio, and a bevy of art supplies including many, many spools of thread (Guttermann is her favorite), quite a collection of embroidery floss, and enough watercolor to last for the next five years (she hopes). She received her BA in art practice from UC Berkeley, her MFA from Mills College, and has been an Adjunct/Visiting Professor in the Bay Area for 20+ years. Her layered mixed-media works and grand-sized installations often utilize unconventional mediums, humor, and color to explore gender, identity, and personal histories, as well as the nature of art and craft itself. She has exhibited internationally in a multitude of venues. As a Hapa (her mother is Japanese, her father Caucasian), she sees hybridity—in materials, in concept—as integral to her practice.

## Macro Waves

Macro Waves: Dominic Cheng, Robin Birdd David, and Jeffrey Yip

Macro Waves is a Bay Area, CA-based creative collective producing experiences centered on social practice, conceptual art, new media, and design. As artists, designers, and technologists of color, the collective embrace collaboration in their creative practice of transforming spaces into places for human connection, exploration, and play. In 2015, the collective was founded by Robin Birdd David and Jeffrey Yip and includes members Anum Awan, Dominic Cheng, and Tina Kashiwagi.

Macro Waves projects examine the systems, infrastructures, and processes of future world-building through a science fiction-based narrative. Using technology and participatory design, Macro Waves experiments with augmenting spatial environments, disrupting human senses, and engaging in social discourse. Their practice focuses on introspective work around ancestry, intergenerational experiences, and collective healing. The collective strives to integrate collaboration and community engagement as a critical foundation in their creative work.

Macro Waves is the current recipient of the 2022–2023 Southern Exposure’s Alternative Exposure

grant and one of the California Arts Council Impact Project Grant recipients, as well as Artists in Residence at Recology (AIR), San Francisco. In 2022, the collective was the Featured Artist for the Asian Pacific Island Cultural Center’s 25th Annual United States of Asian America Festival and participated in the Youkobo Artist Residency in Tokyo, Japan, in 2020. The collective has exhibited at SFMOMA, SWIM Gallery, YBCA, SFAC Gallery, SOMArts, ICA SF, Lightbox NYC, and Á Space Hanoi.

## Michael Arcega

Michael Arcega is an interdisciplinary artist working primarily in sculpture and installation. His work has been exhibited nationally and internationally. His work has been exhibited at venues including the Contemporary Jewish Museum, Asian Art Museum, Museum of Contemporary Art in San Diego, the de Young Museum in San Francisco, Yerba Buena Center for the Arts, the Orange County Museum of Art, the Museum of Fine Arts in Houston, Cue Arts Foundation, and the Asia Society in NY among many others. He has degrees from the SFAI and Stanford University and is currently an Associate Professor of Art at San Francisco State University.

## Miko Lee

Miko Lee is an activist, storyteller and educator. She believes in the power of story to amplify voices. Miko is lead producer of APEX Express on KPFA Radio focused around AAPI activists and artists. She is Director of Programs for Asian Americans for Civil Rights and Equality and on the National Advisory Committee of Teaching Artists Guild. Miko’s career has been rooted in the nonprofit world, first as a theatre actor, director and writer and then as an artistic director and as an arts education leader. Miko was executive director of Youth in Arts for over a decade and prior to that was Director of Arts and Public Education at East Bay Center for the Performing Arts. In addition to Teaching Artists Guild, Miko is an arts Equity BIPOC leader and serves on California’s Special Education + Arts Working Group and the Public Will Committee of CREATE CA. Miko’s extensive background in theatre includes working on shows at Berkeley, Seattle and South Coast Rep, Public Theatre, Mark Taper Forum and many others.

## Paolo Asuncion

Paolo Asuncion grew up in Manila, and the son of a popular actor, was immersed in the film industry from a very early age. This translated into making corporate films as part of his visual arts career that led to documentaries. Being an avid motorcyclist, His work uses the motorcycle subculture as a springboard to explore subjects like religion, craft, family legacy, as well as death and sex trafficking. His films have garnered awards in the New York, Lisbon, French Riviera, Toronto, and Tokyo motorcycle film festivals, and he is currently working on his first feature film. He lives and works in the San Francisco Bay Area.

## Patty Chang

Patty Chang is a Los Angeles based artist and educator who uses performance, video, installation and narrative forms when considering identity, gender, transnationalism, colonial legacies, the environment, large-scale infrastructural projects and impacted subjectivities. Her most recent collaborative project, Learning Endings, is a multi-part interdisciplinary research that has surfaced amidst the overlapping contexts of climate crisis, threatened ocean ecosystems, and challenges to scientific expertise. It examines the work of scientists who perform necropsies of dead marine mammals as unacknowledged forms of attention and care, and explores how various kinds of art practice can support this care work. Her work has been exhibited at such institutions as the Museum of Modern Art, New York; Guggenheim Museum, New York; New Museum, New York; M+ Museum, Hong Kong; BAK, Basis voor actuele Kunst, Utrecht, and Chinese Arts Centre, Manchester, England. She teaches at the University of Southern California in Los Angeles, CA.

## Rachel Lastimosa

Rachel Lastimosa is an interdisciplinary artist, producer and performer, scoring for theater and film and has toured nationally and internationally. She has worked in the Bay Area as a community organizer, arts administrator and artist since the early aughts. Recent projects include Kularts' Lakbai Diwa (2020–2021), SF Urban Film Fest

documentary Sa Amin, and Bituin Worlds with the support of SF Art Commission and the Asian Art Museum. In 2018, she founded AGASAN, a project that utilizes the arts to provide access to wellness spaces for BIPOC and LGBTQ+ communities. Rachel's focus on the intersection of arts, culture, equity and wellness continues to be the foundation for her creative pursuits and community service. She's currently pursuing a master's degree in Expressive Arts Therapy.

## Sierra Katow

Sierra Katow is a standup comic, writer, and actor. She recently shot her first hour long stand up special with Comedy Dynamics and can be seen playing Evangeline on Mindy Kaling's The Sex Lives of College Girls on Max. In the past, she was part of the main cast of The G Word with Adam Conover on Netflix and voiced characters for Disney's Raya and the Last Dragon. She has also written for shows like Exploding Kittens (coming soon to Netflix), Close Enough (Max), Earth To Ned (Disney+), and Eureka! (Disney+).

## Theresa Hak Kyung Cha

Theresa Hak Kyung Cha (1951–1982) was an American artist and writer, born in South Korea during the Korean War. Her family immigrated to the United States in 1962. Cha earned her BA and MA in comparative literature and her BA and MFA in art from the University of California, Berkeley. Her work incorporates multiple perspectives of culture, history, and artistic media, culminating as performance pieces, films, concrete poetry, and artists' books. Permutations (1976) is a structuralist film in which images of the artist's sister, and the artist herself flash in black-and-white frames, commenting on women's visibility, anonymity, and absence. One week after the publication of her book Dictée, Theresa Hak Kyung Cha was murdered in New York City at the age of 31. Despite her unfortunate and early death, Cha's collection of films, writings, and visual art is substantial, and is housed at the University of California, Berkeley Art Museum and Pacific Film Archive.



## TT Takemoto

TT Takemoto is a queer Japanese American artist and scholar exploring Asian American history, sexuality, and identity. Their experimental films delve into hidden dimensions of same-sex intimacy and trauma that exist within Asian and Asian American archives. Takemoto interacts with found footage and archival materials through labor-intensive processes of painting, lifting, and manipulating 16mm/35mm film emulsion using scotch tape, razor blades, and nail polish. By engaging with tactile and sensory dimensions of queer histories, Takemoto conjures up immersive fantasies involving butch surgeons, femme fish fileting, and homoerotic breadmaking. Their films honor queer Asian Americans who lived, loved, and labored together during the prewar era and beyond. Takemoto is dean of Humanities and Sciences at California College of the Arts.

## Vincent Pan

Vincent Pan is the Co-Executive Director for Chinese for Affirmative Action (CAA), a community-based civil rights organization in San Francisco. CAA advocates for systemic change that protects immigrant rights, promotes language diversity, and advances racial justice. At CAA, Vincent is helping to lead Asian Americans for Civil Rights and Equality, a new network-based approach for social justice movement building, and is Executive Advisor to the national Stop AAPI Hate coalition. Prior to CAA, Vincent worked with the Clinton Foundation to address HIV/AIDS in China, and before that he co-founded and led Heads Up, a youth development AmeriCorps program in Washington, D.C. Vincent currently serves as the Board Co-Chair of the Center for Asian American Media and Vice-Chair of the Chinatown Media and Arts Collaborative.

## Weston Teruya

Weston Teruya is an artist and cultural producer based in the Bay Area who moves between individual and collective modes of practice to explore the haunting manifestations of racial inequity in the visual landscape. His individual work has been exhibited at Mills College Art Museum, Yerba Buena Center for the Arts, and the University

of Hawai'i, Mānoa; and supported by Artadia, Asian Cultural Council, and Headlands Center for the Arts. His collective practice manifests primarily through Related Tactics, an artistic collaboration between Michele Carlson, Weston Teruya, and Nathan Watson who create projects at the intersection of race and culture. They have produced projects with Montalvo Arts Center, Wexner Center for the Arts, University of San Francisco Thacher Gallery, and Kala Art Institute; and been supported through a 2023 Rainin Fellowship, and grants from the Craft Research Fund and Ruth Foundation for the Arts.

## Yangyifan Dong

Yangyifan Dong is a visual artist and designer originating from Chengdu, China, currently lives and works in New York. Dong works with imagery and context in web and print media to explore and communicate ideas related to speculative futures, urban and domestic environments, and the relationship between aesthetics and everyday forms of living. With an MFA in Design from California College of the Arts, Dong's work has been awarded and published by organizations such as Tokyo TDC, New York TDC, Communication Arts, and idea Magazine.

## YiuYiu (Chinatown Records)

YiuYiu 瑶瑶 Rochelle Hoi-Yiu Kwan (Chinatown Records) is a cultural organizer, oral history educator, and DJ based on Lenape land in NYC's Manhattan Chinatown. She takes on her childhood name YiuYiu 瑶瑶 as an artist and DJ for Chinatown Records, a community effort to celebrate the breadth of music and history that comes with inherited family record collections. Alongside her family and neighbors, YiuYiu 瑶瑶 produces Chinatown block parties, sonic family histories, and listening sessions to foster intergenerational dancefloors and memories as powerful acts of resistance and resilience.



# curators

## Candace Huey

Candace Huey (she/her) is an interdisciplinary curator and art historian with over fifteen years of experience conceptualizing and implementing engaging arts exhibitions and programming for local and international institutions, private entities, corporations, and non-profit organizations. Candace has worked for the Fine Arts Museums of San Francisco, Bonham's auction house, Alameda County Arts Commission, and various art galleries in the Bay Area. As an independent curator, she conceptualized exhibitions for Consulado General de México and España, Consulat Général de France, Villa Albertine San Francisco, Chinese Culture Center of San Francisco and public exhibitions in Chicago, London, Paris and France. Candace holds degrees in Art History from The Courtauld in London and U.C. Berkeley, and has presented her academic research on seventeenth-century Dutch Art at renowned conferences in the United States and the Netherlands. Most recently, she was full-time faculty teaching graduate and undergraduate Art History courses at a private university. Candace is co-chair of SECA Council at SFMOMA, on the Northern California Chapter Leadership Committee of ArtTable, and an active member of Artadia San Francisco Council, Headlands Center for the Arts and San Francisco Art Dealers Association.

## Erina Alejo

Erina Alejo (they/them/siya) is a cultural worker, artist, and arts administrator based in the San Francisco Bay Area. Centering care, youth empowerment, and project management, Alejo is dedicated to sustaining long-term collaborative relationships with micro communities—from university students, to families, tenants, service workers, and organizations—towards nurturing their narratives, power, and community cultural wealth. Their work as an artist informs their grantmaking work at the Office of the Vice President for the Arts at Stanford University, and organizing work with neighborhood-based grassroots organizations like San Francisco's SOMA Pilipinas Filipino Cultural Heritage District. They are the recipient of Center for

Cultural Innovation, San Francisco Arts Commission, Southern Exposure, Asian Pacific Islander Cultural Center grants; Alejo has also participated in juries for several of these organizations. They are a third-generation San Francisco renter with family, and has work acquired by the San Francisco Museum of Modern Art. Erina prefers to surf at dawn, pending conditions.

## PJ Gubatina Policarpio

PJ Gubatina Policarpio (he/him) is an educator, curator, and community organizer with over 10 years of experience in museum education, public programming, and art administration. As the inaugural manager of youth development at the Fine Arts Museums of San Francisco, PJ led transformative initiatives, programs, and partnerships that engaged diverse audiences. He is currently Associate Director at Micki Meng Gallery with locations in San Francisco's Chinatown and Bayview districts. PJ has organized exhibitions and programs internationally including Notes on Cultural Evidence (Slash Art, 2023), Notes for Tomorrow (Independent Curators International, 2021–Present), Conversations on Carlos Villa: World-Making and Cross-Cultural Solidarity (Asian Art Museum, 2022), Tarsal by Metatarsal (Headlands Center for the Arts, 2021), Solidarity Struggle Victory (Southern Exposure, 2019), Rally: Queer Art and Activism Now (Dixon Place, 2017), bringing together artists, writers, poets, scholars, activists and collectives whose engaged practices challenge power and representation. PJ is co-founder of Pilipinx American Library, an itinerant library and programming platform dedicated to diasporic Filipinx perspectives. His publications are in the collection of the Thomas J. Watson Library at The Metropolitan Museum of Art. Born in the Philippines, PJ immigrated to the United States in his early teens. He lives and works between San Francisco and New York City.

**Sara Wessen Chang**

Sara Wessen Chang (she/her) is an art historian and curator. She is Director, Artist Relations at Jessica Silverman (Chinatown), representing artists Chelsea Ryoko Wong, Rupy C. Tut, Dashiell Manley, and Woody De Othello amongst others. Following her graduate studies at The Institute of Fine Arts, NYU, she has curated and organized numerous exhibitions at the Fine Arts Museums of San Francisco, San Francisco Museum of Modern Art, McEvoy Foundation for the Arts, Blunk Space, and elsewhere. She has contributed writing to numerous publications, including Once Upon a Time in America (Wallraf Richartz Museum, 2018), David Park: A Retrospective (SFMOMA, 2020), and Joan Brown (SFMOMA, 2022). Sara was born in and lives in San Francisco, CA.

**about Edge on the Square**

Located at the heart of San Francisco Chinatown and the first project envisioned by Chinatown Media & Arts Collaborative (CMAC), Edge on the Square is a year-round contemporary art hub for activists, artists, designers, educators, entrepreneurs, scholars, and technologists. Cultivating an inventive and collaborative model for contemporary art experimentation and visitor experience, our programs will harness the energy and excitement of art and media to expand the neighborhood's dynamic artistic and cultural diversity, as well as our understanding of our collective history and the full spectrum of American pluralism. We believe that the transformative power of art is critical to strengthening communities and catalyzing positive social change.

**Edge on the Square Staff**

<b>Joanne Lee</b>	Executive Director
<b>Candace Huey</b>	Curator
<b>Linda Lui</b>	Head of Marketing & Communications
<b>Robyn Mallery</b>	Marketing & Communications Associate
<b>Erika Pallasigue</b>	Programs Associate
<b>Yunyi Zhang</b>	Programs Associate
<b>Maria Palaroan</b>	Administrative & Facilities Manager
<b>Linda Huang</b>	Office Assistant

## about Chinatown Media & Arts Collaborative (CMAC)

CMAC was founded in 2017 by six leading Asian American community organizations dedicated to communicating compelling Asian American narratives and building multiracial solidarity from San Francisco Chinatown. It is a first-of-its-kind multidisciplinary organization with deep roots in civil rights, community development, media, community engagement, and the arts. CMAC's dream and first project is to create a cultural hub in the heart of Chinatown to bring together art and activism across past and present to imagine an inclusive America

CMAC's founding organizations include the Angel Island Immigration Station Foundation, Chinese Culture Foundation, Chinese Historical Society of America, Center for Asian American Media, Chinatown Community Development Center and Chinese for Affirmative Action.

### CMAC Board

Stephen Gong — **President**

Vincent Pan — **Vice President**

Tatwina Chinn Lee — **Treasurer**

Justin Hoover — **Secretary**

Mabel S. Teng

David Ho

Buck Gee

Jay Xu

Malcolm Yeung

Jenny Leung

## acknowledgements

### EDGE ON THE SQUARE ACKNOWLEDGES THE GENEROUS SUPPORT OF

California Governor Gavin Newsom  
California State Legislature  
California State Librarian  
San Francisco Mayor London Breed  
San Francisco Board of Supervisors  
California Arts Council  
San Francisco Arts Commission  
San Francisco Grants for the Arts  
San Francisco Office of Economic and Workforce Development  
Foundation for Quality Housing Opportunities, Inc.  
Mimi and Peter Haas Fund

### COMMUNITY PARTNERS

Angel Island Immigration Station Foundation  
Asian Pacific American Heritage Month  
Cameron House  
Center for Asian American Media (CAAM)  
Chinatown Community Development Center  
Chinese Culture Center & Foundation of San Francisco  
Chinese for Affirmative Action  
Chinese Historical Society of America  
Chinese Progressive Association  
Clarion Performing Arts Center  
Community Youth Center (CYC)  
Kai Ming Rainbow Children's Center Chinatown  
I-Hotel Manilatown Heritage Foundation  
Self-Help For the Elderly  
San Francisco Museum of Modern Art (SFMOMA)  
Yerba Buena Center for the Arts (YBCA)

### UNDER THE SAME SUN

Curators: Candace Huey, Erina Alejo, PJ Policarpio and Sara Wessen Chang  
Lead Producer: Joyce Mak  
Programs: Erika Pallasigue, Yunyi Zhang, Maria Palaoan, Linda Huang, Kitty Teerling, Lianne Hope, Valerie Liu, Jasmine Liang, Brittany Gipson  
Marketing & Communications: Linda Lui, Robyn Mallery  
Design Concept: Yangyifan Dong, Kaming Lee

### EDGE ON THE SQUARE PROGRAMS COMMITTEE

Jenny Leung, Stephen Gong, Hoi Leung, Justin Hoover, Edward Tepporn, Amy Zhou

### SPECIAL THANKS TO

Claudine Cheng, Sarah Wan, Eva Lee, Lily Lo, Clara Hsu, Brandon Jew, Calvin Yan, Cathie Lam, Tan Chow, Karen Chan, Shaw San Liu, Ka Yi Lau, Julie Charles, Doug Mei, Max Leung, Yuanyuan Zhu, Thúy Trần, David Tse, Songvy Nguyen, Korey Lee, Gladys Chiu, Herby Lam, Chinatown Merchants Association, Be Chinatown, Mister Jiu's, SF Central Station Police Station, Shared Spaces Program (JAM)

# continuous activations

5:00–10:00pm

## ① Edge on the Square

- Ahn Lee, *Silkworm Deity*
- Bahar Behbahani, *Knead Me A Moon*
- Connie Zheng, *Nine Suns*
- Indira Allegra, *TEXERE*
- Lisa Solomon × Christine Buckman Tillman, *Chroma*
- Macro Waves, *Collective Futures*

## ③ Wentworth Place

- Hang Huynh, *Happiness of Being A Kid*

## ⑤ Ross Alley

- Carol Anne McChrystal, *Walang Buwan II (Palengke Pasalubong Meryenda)*

## Throughout Chinatown

- Yangyifan Dong × Kaming Lee, *edge, enduring, healing, imagination, luminosity, radiance, resilience, solidarity, thrive, together*

